



MARINE ELECTRONICS

for professional and leisure navigation
since 1984

BOAT BUILDERS



**PROFESSIONAL
FISHING**



**SPORT FISHING &
LEISURE**



WORKBOATS



Seiwa Marine Systems

EXPLORER 23

Multifunction Chartplotter Controller
the perfect mate for the professional fishermen

Display not included



HDMI Video Out

Choose your favorite HDMI display and experience HD resolution with Explorer 23.

Compatible with SW BBFF CHIRP

Get quality CHIRP-based fish finder by connecting the Explorer 23 to the Seiwa SW BBFF CHIRP module.

Convenient, Tough and Reliable

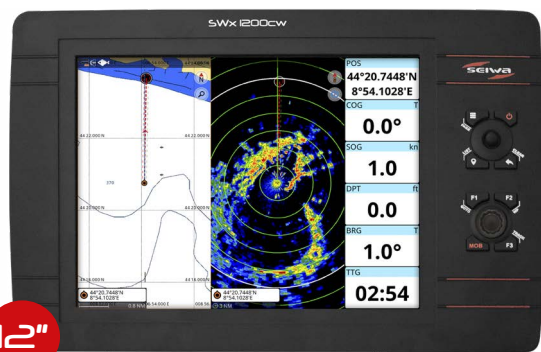
Easily mount the Explorer 23 wherever you need it and use it in any condition thanks to the rugged hard keys and joystick.

SWx

Multifunction Marine System
for professional and leisure navigation



SWx 900



SWx 1200

Hybrid Interface

The SWx series maximizes the combined benefits of a touch screen with the reliability of an ergonomic keypad. The rotary knob provides fast and precise control in every condition, while the touch screen optimizes experience in map exploration and route building.

High-Resolution, Ultra Bright Display

For perfect visibility, even under the brightest sun.

Built-in Fish Finder CHIRP

The SWx series is available with optional built-in CHIRP Echo Sounder.

Features of both Explorer 23 and SWx models

User customizable keys

Programming function "F" keys give you instant access to your favorite function.

Backlit Keypad

The backlit keyboard is designed for easy use in any condition, even with gloves.

NMEA 0183 & NMEA 2000

Transform your chartplotter in a multifunctional display integrating AIS, autopilot, engine, GPS compass, Fish Finder and other instruments.

Quick key functions

Go To, Mark, Track, Waypoint, MOB (Man OverBoard).

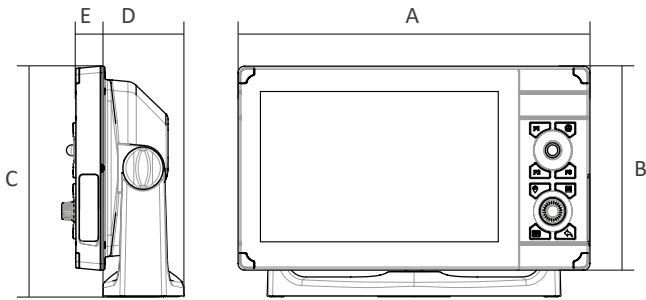
IPX6 Waterproof Rating

Seiwa navigation systems are rated IPX6 for protection against waves, splashes and humidity of the marine environment.

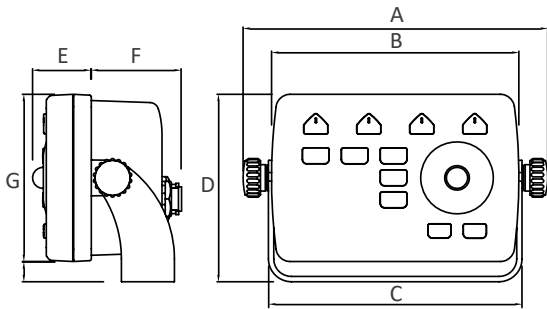
WiFi connectivity

Keep your chartplotter always up to date and connect a compatible radar antenna thanks to the built-in WiFi.

Hardware Specifications



	SWx 900	SWx 1200
A	278 mm (10,9 in.)	391 mm (15,3 in.)
B	154 mm (6,06 in.)	258 mm (10,1 in.)
C	174 mm (6,8 in.)	279 mm (10,9 in.)
D	64 mm (2,5 in.)	120 mm (4,7 in.)
E	32,6 mm (1,2 in.)	30 mm (1,1 in.)



	Explorer 23
A	172,5 mm (6,8 in.)
B	140 mm (5,5 in.)
C	143,5 mm (5,6 in.)
D	106,5 mm (4,2 in.)
E	33,3 mm (1,3 in.)
F	51,1 mm (2 in.)
G	95 mm (3,7 in.)

	SWx 900	SWx 1200	Explorer 23
Display size	9"	12"	✗
Display resolution	800 x 480 px	1024 x 768 px	✗
Display brightness	1100 nits	1250 nits	✗
Touchscreen	✓	✓	✗
Backlit keypad	✓	✓	✓
Built-in GPS receiver	10 Hz GPS/GLONASS	10 Hz GPS/GLONASS	✗
CHIRP Fish Finder built-in	SWx 900cw model	SWx 1200cw model	✗
SW BBFF CHIRP compatible	SWx 900w model	SWx 1200w model	✓
Transducer connector	SWx 900cw model	SWx 1200cw model	✗
External GPS connector	✓	✓	✓
NMEA 2000	✓	✓	✓
NMEA 0183	2x Rx/Tx on power cable	2x Rx/Tx on power cable	2x Rx/Tx on power cable
Micro SD memory slot	✓	✓	✓
WiFi connectivity	✓	✓	Explorer 23 WiFi model
Mounting options	Bracket, surface, flush mount	Bracket, surface, flush mount	Bracket, surface, flush mount
Waterproof	IPX6	IPX6	IPX6
Supply voltage	10-35 Vdc	10-35 Vdc	10-35 Vdc
Operating temperature	-10°C / +60°C	-10°C / +60°C	-20°C / +60°C
Storage temperature	-20°C / +80°C	-20°C / +80°C	-20°C / +80°C
HDMI output	✗	✗	✓
Remote control receiver	✗	✗	✓
Weight	1160 g	1980 g	350 g
Maximum power consumption	12W or 25W* *Swx900cw model	24W or 32W* *Swx1200cw model	4W or 5.6W* *Explorer 23 WiFi model



Radar Integration

Transform your Seiva chartplotter into an integrated radar display

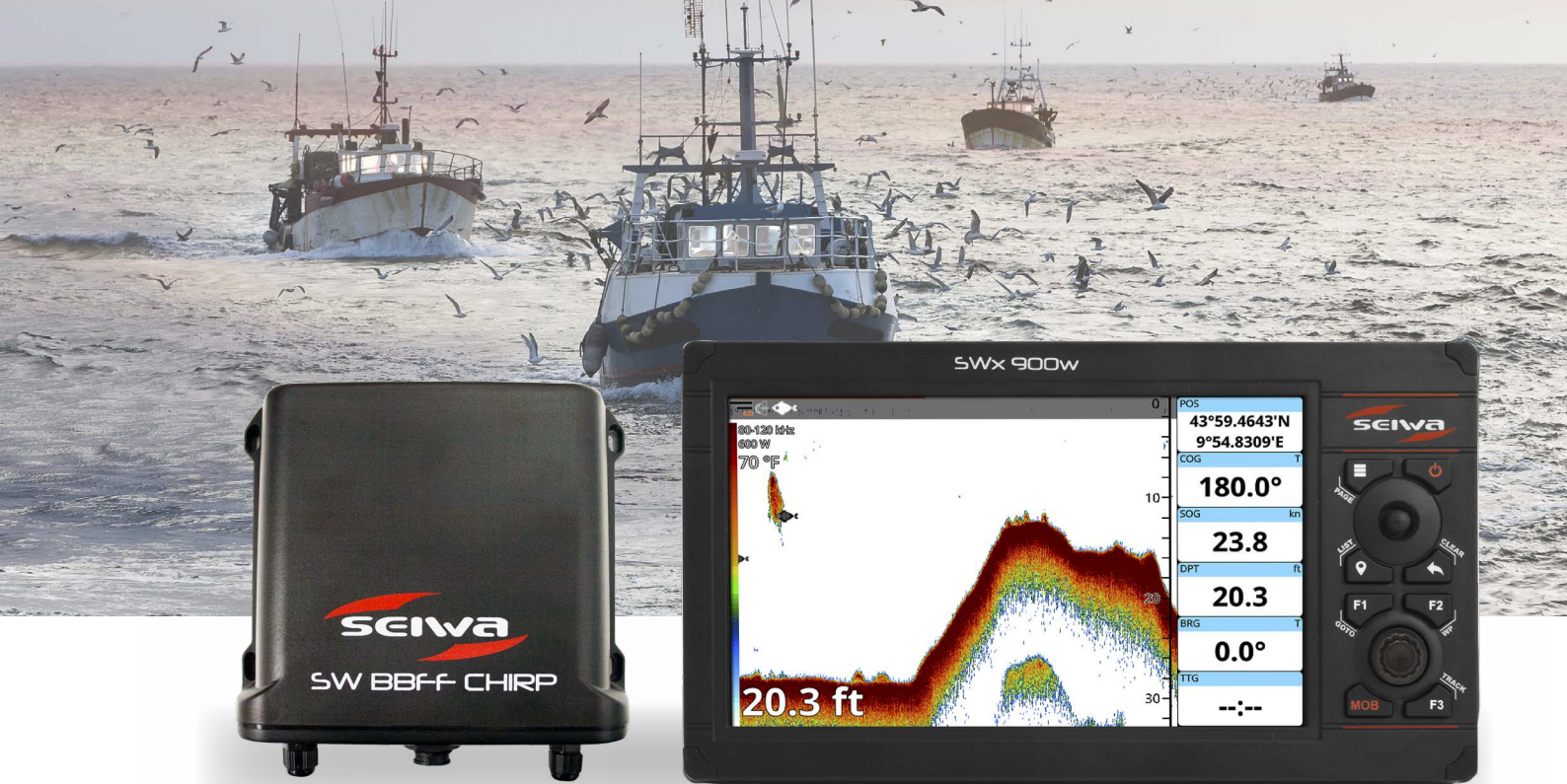
Easily connect the 4kW high power all weather radar MDS-15 to Seiva navigation systems for visual situational awareness, fully integrated with electronic charts, AIS and other onboard features.

- Compatible with Seiva multi-function chartplotter series Explorer 23 WiFi, SWx900 and SWx1200.
- Instant connectivity via fast and easy WiFi from your Seiva chartplotter to radar MDS-15 through the included KM Router, while the radar connects to the KM-Router through ethernet cable.
- Dedicated radar page for configuration, tuning and display of radar image onscreen.
- Split screen mode with radar and chart screens side-by-side for clear viewing and quick comparison.
- Radar overlay mode for viewing radar image draped over chart display.
- Multiple orientation modes for flexible display (North Up, Heads Up, Course Up).
- Full radar antenna control and configuration, including Automatic and Manual tuning modes.
- Anti-clutter modes help to compensate for sea and rain interference.
- Echo stretch to magnify targets for easier viewing.
- Overlay and full info for AIS and DSC targets, as well as user marks, events and routes.
- 36 NM maximum range
- Antenna rotation speed:
 - Long range (3~36nm): 24 RPM (+2)
 - Medium range (1.5~3nm): 36 RPM (+2)
 - Short range (0.125~1.5nm): 48 RPM (+2)

Onscreen radar tools:

- 1 Parallel Cursor
- 2 Variable Range Marker (VRM)
- 3 Range Rings
- 4 Range Databox
- 5 TX / Stand-by Icon
- 6 Guard Zones
- 7 Heading Line
- 8 Electronic Bearing Line (EBL)

* Radar implementation is available on chartplotters running software version 5.4.0 or greater.

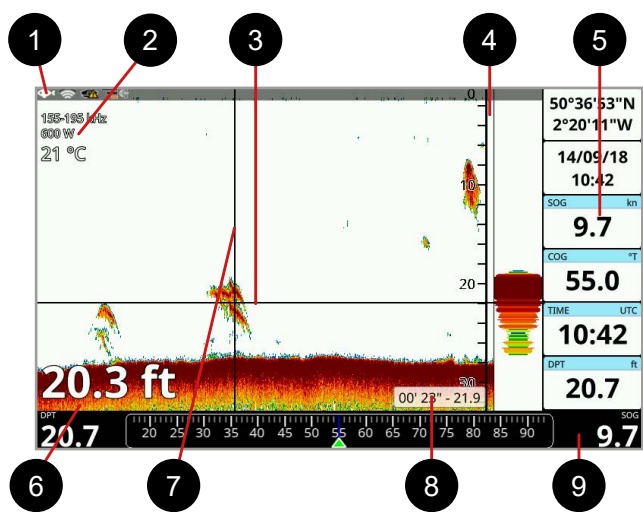


Fish Finder CHIRP

Turns your Seiva chartplotter into a Fish Finder CHIRP

Fish Finder CHIRP is embedded on SWx 900cw and SWx 1200cw models. Other Seiva chartplotter models can connect the SW BBFF CHIRP module.

- Compatible with Echonautics, Airmar and Radarsonics transducers (8-PIN male connector required)
- Airmar transducers: Xducer ID® detection system automatically selects the power output and configures the parameters to suit the transducer
- Display mode: Single and Dual frequency (continuous wave only)
- Zero line rejection
- Alarms: shallow water, water temperature, deep water, etc.
- Echogram history
- Point on map
- Calibration: temperature offset and speed offset
- Waterproof and shock resistant housing



- 1 Fish Finder icon
- 2 Transducer data: frequency, power of the transducer and water temperature
- 3 Variable depth marker
- 4 Depth ruler: shows the range of depth, on which the Fish Finder is operating.
- 5 Databoxes
- 6 Depth data: units depend on your plotter settings
- 7 Vertical time marker is a vertical line on the echogram.
- 8 Cursor box reporting time and depth data
- 9 Compass bar

SW BBFF CHIRP	
Transducer Frequency	CHIRP: LF / MF / HF (40 to 210 kHz) CW: 50/200 kHz
Transducer Power	From 300 W to 1 kW
Connections	Power / 2x Serial / 1x transducer

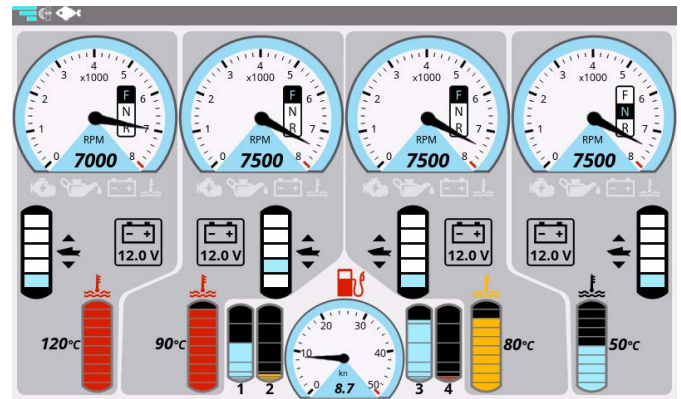
Never miss a thing

Browse the Fish Finder history up to 5 minutes and, if you find anything interesting, place a mark on it! Then point the cursor on map to instantly view distance and bearing.

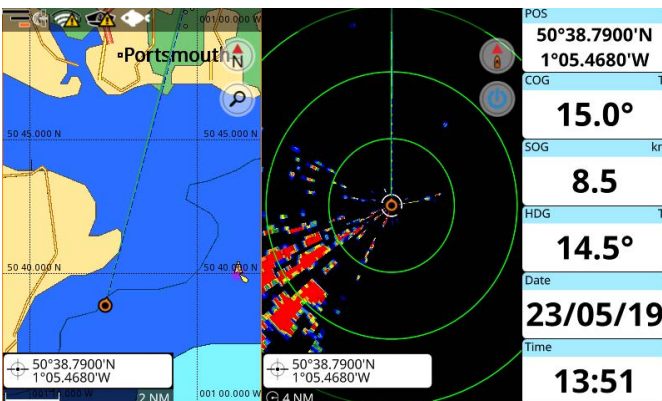
Software Features



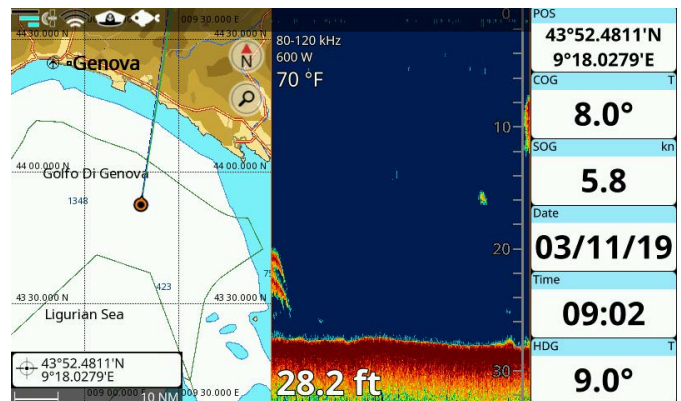
Navigation & Routing



Engine Parameters



Map & Radar



Map & Fish Finder

Fully Customizable Display

Personalize your display configuration: map, fish finder, radar, compass bar, data boxes, split page.

Map & Navigation

Explore your chart database with information on map objects and choose your favorite navigation mode: Go To, Route Following, Route Following Optimization and Easy Routing. Use the A-B function to measure the distance and bearing between two points.

Tracks, Routes, Marks and User Data Management

Fast, easy and accurate management of your navigation data. Create marks/events, tracks, routes, waypoints and boundaries and store them in the plotter database.

Fish Finder CHIRP

The Seiya Fish Finder with CHIRP technology eliminates surface clutter and water column noise, for hi-fi visibility.

Radar Integration

Transform your chartplotter into an integrated radar display.

Engine Parameters

Display engine parameters and performance when connected to a compatible NMEA 2000 engine through CAN bus.

Situational Awareness

Improve your situational awareness by configuring and enabling various alarm functions. Monitor AIS targets and distress signals. Get warned when your boat gets too close to another vessel. Enable Navigation alarms such as: boundary crossing, grounding, dept, XTD, etc.

Autopilot

Connect your chartplotter to an autopilot through NMEA 0183 or NMEA 2000, to follow routes created on your charts.

Services

Captain Cloud

Safeguard and manage your nav and fishing data!

Configure your navigation system to automatically connect to the internet to backup and synchronize your personal routes, tracks and marks to the Cloud. Activate your free Captain Cloud account and manage your data online at home or on the road.

Mirror Controller

Turn your mobile device into a remote control!

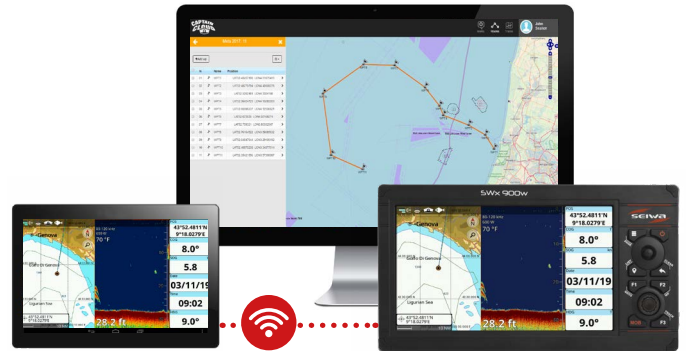
Simple download the Mirror Control App, install and easily connect to your system via WiFi. Once connected you have a full-featured mobile repeater and controller.

Software Updating

Easily download and install new software for your Seiwa system!

Configure your navigation system to connect to the internet and check for new software, including new features and important bug fixes.

Software updates are also available for manual download at www.seiwa-marine.com.



Cartography

Seiwa chartplotters are compatible with C-Map and Navionics marine charts.



All product and company names are trademarks™ or registered® trademarks of their respective holders.

Accessories



CHIRP transducers



SW BBFF CHIRP



M8 Smart GPS Receiver



GNSS vector compass



AIS Instruments: transceivers, receivers and antenna splitters



RC45 Remote Control



Radar Antenna MDS-15



Traditional CW Transducers

35 years of expertise in marine electronics

Passion | Innovation

Technology Know-How | Worldclass Commitment to Quality
Personalized Customer Care | Worldwide Distribution Network
Made in Italy

Seiwa got its start in 1984 building one of the first digital marine navigation instruments, and has continued pursuing high standards of technology, quality, innovation and customer's satisfaction worldwide.

Seiwa's product range includes Multifunctional Chartplotters, GPS Antennas, Radar Antennas, GNSS Heading sensors, AIS, Fish Finders and Transducers.

Our customers include a wide range of "mariners", from the professional fisherman to the everyday boat owner, all sensitive to Seiwa's personal touch.

Contact Seiwa's staff and experience what it's like NOT to be a number!
Customer support is guaranteed directly by Seiwa staff and our distribution network is worldwide.



Quality marine electronics for professional
and leisure navigation since 1984

Seiwa by:

AvMap s.r.l.
Viale Zaccagna, 6
54033 Carrara (MS) Italy
orders@seiwa-marine.com

BRXXXSEAF020