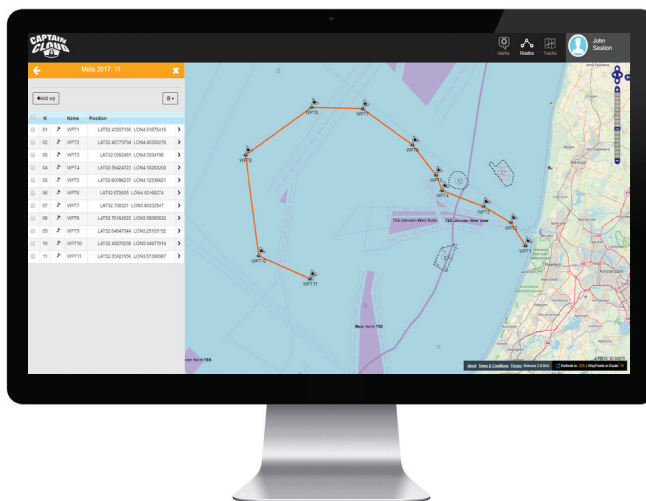
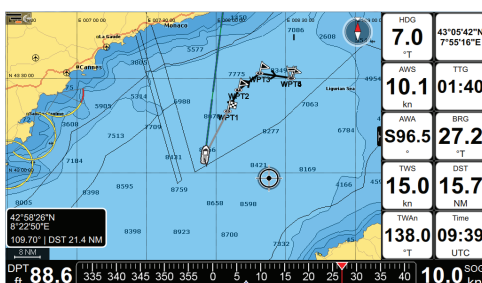
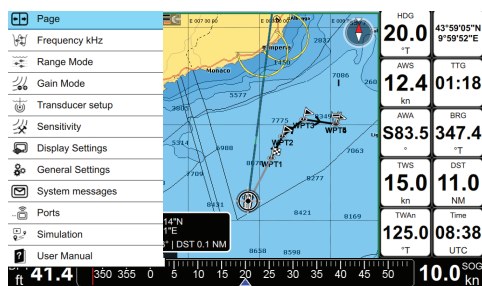


EXPLORER 23 Series

Chartplotter + Multifunction Controller is the perfect mate for the professional fishermen or for high-tech dashboard lovers



Tracks, Routes and Marks management

The EXPLORER 23 interface is optimized for an easy, fast and accurate management of your data. The advanced tracks management allows you to transform any track in a route. You can manage up to 30,000 marks with a new set of colors and icons.

Software updates come easy

Keep your controller always up to date, thanks to the Wi-Fi connectivity.

Join the CaptainCloud

Synchronize your data with CaptainCloud and manage routes, tracks and marks from any connected device. Build your favorite routes easily at home, and find them ready on board!

HDMI Video output

EXPLORER 23 is compatible with any HDMI display to provide a HD resolution experience!

Configure your desired view

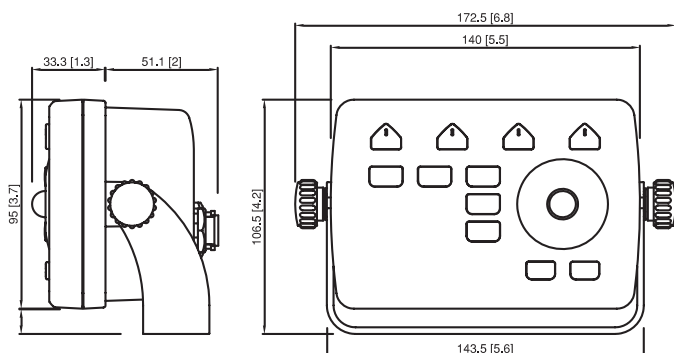
Designed to let you choose what to see and what to hide: map, compass bar, data boxes.

NMEA 0183 & NMEA 2000

EXPLORER 23 is extremely versatile as it comes with two NMEA0183 serial ports and one NMEA2000 port to connect any compatible device such as AIS, autopilot, engine, etc.



EXPLORER 23



Dimensions are in mm [in.]

	Explorer 23	Explorer 23 Wi-Fi
Compatible with any HDMI display	Yes	
Backlit keyboard	Yes	
External GPS connector	Yes	
NMEA 2000	Yes	
NMEA 0183	2x Rx/Tx on power cable + external alarm	
HDMI output	Yes, connector on cable (1,5m)	
Memory slot	MicroSD	
Wi-Fi connectivity	No	Yes
BLE connectivity	Yes	
Remote control receiver (radio IF 2.4 GHz)	Yes	
Waterproof	IPX6	
Weight	350 g	
Supply voltage	10-35 Vdc	
Power consumption	1.2 Watt typical	
Operating temperature	-20°C +60°C	
Storage temperature	-20°C +80°C	



Customize the function keys

Programming F keys give you instant access to your favorite functions.

Tough and reliable

The **backlit keyboard** is easy to use in any condition, even with gloves. The optional remote control is an extra hand, for example to quickly save marks during your activity.

C-Map 4D and Max compatible

Try the Easy Routing and the Route Check to improve your routes.



Compatible with C-Map 4D and Max

Accessories



Autopilots:
SW AP 03 and SW AP 05



Seiwa M8
Smart GPS
Receiver



AIS Instruments:
transceiver, receiver
and antenna splitter



Seiwa RC45
Remote Control

AvMap s.r.l.
V.le Zaccagna, 6
54033 Carrara (MS) Italy
orders@seiwadirect.com