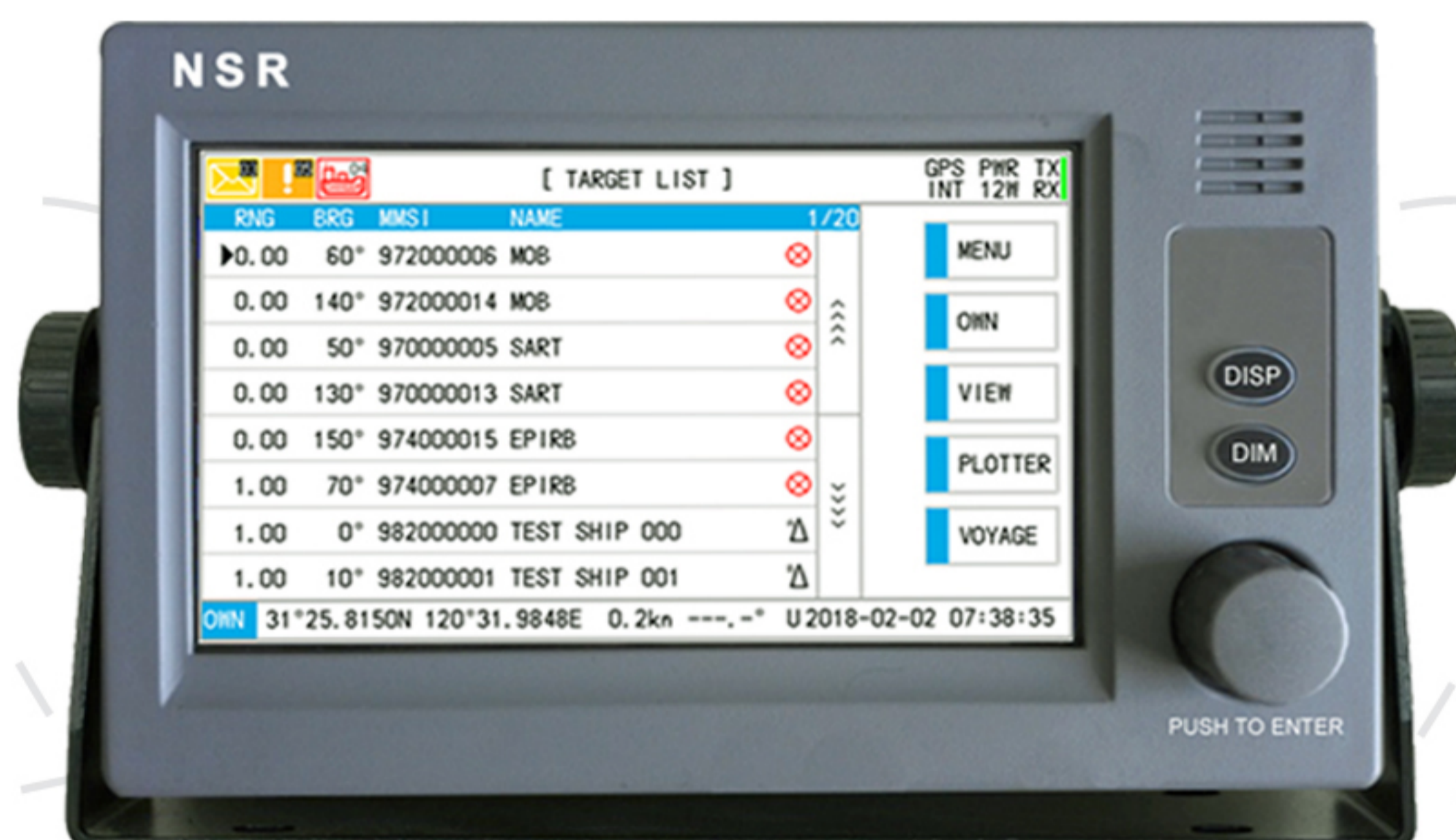


- Meet the latest IMO regulation and ITU standards
- Compatible with AIS AtoN, AIS SART and MOB
- Built-in isolated DC/DC with wide range input
- Support all NEMA versions for GNSS/HTG input
- High stability and easy maintenance
- Type approval with DNV-GL, CCS and VR
- Type approval of Inland AIS by EU



**MKD**



**AIS TRANSPONDER**

- Fully complying with the latest international regulations, IMO MSC.74 (69) , ITU-R M.1371-5, IEC 61993-2 (2018) , etc.
- 7 inch, color LCD, touch screen operation with adjustable contrast and brilliance.
- Interface for RADAR, ECDIS, INS, GYRO and external GNSS equipment.



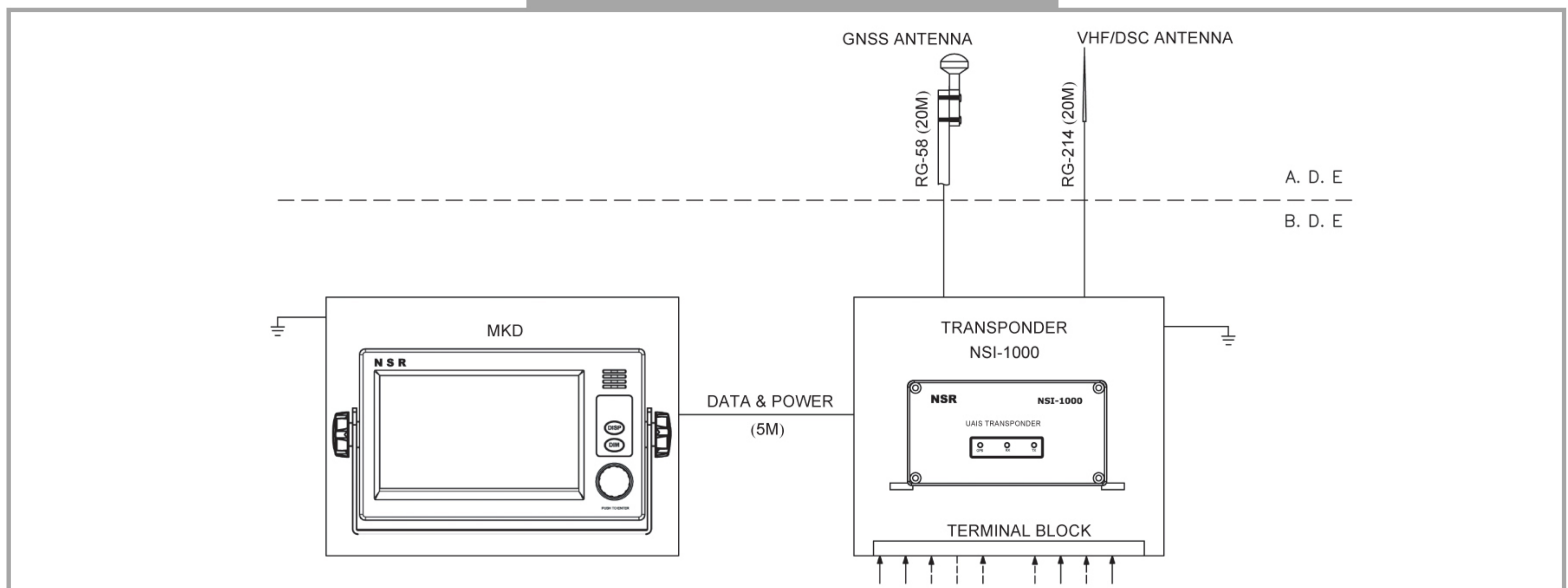
## SPECIFICATIONS

- Frequency: 156.025 ~ 162.025 MHz
- Default Channel: AIS 1 (CH2087), AIS 2 (CH2088)
- DSC Channel: CH70 (156.525 MHz)
- TX Power: 12.5W (High) / 1W (Low)
- I/O Interface: Input RS422×3, Output RS422×4
- Power Supply: 24VDC (12V~ 38V)
- Size: 81 (H) × 174 (W) × 257 (D) mm (Transponder)
- Weight: 2.3kg (Transponder), 1.25kg (MKD)
- IP Grade: IP22 (Transponder, MKD), IP66 (Antenna)

## EQUIPMENT LIST

- **STANDARD**
  - Transponder 1pc
  - MKD 1pc
  - GNSS Antenna (cable length=20m) 1pc
  - Accessories 1set
- **OPTIONS**
  - NES-2008 Plotter 1pc
  - NES-2010 Plotter 1pc
  - VHF Antenna 1pc
  - Pilot Plug 1pc
  - Flush Mount Brackets for MKD 1set

## SYSTEM DIAGRAM



## SIZE DIMENSION

