

# NAVITRON SYSTEMS LTD

## NT888G MK2 GYRO/MAG AUTOPILOT

Type Approved for HSC & Conventional  
Deep Hull Vessels By Notified Body 0098



ISO 16329 & 11674 (2019) / IMO A342 (IX)  
as amended by MSC 64/67 Annex 3

Designed and developed by Navitron Systems Ltd for professional use on Magnetic and/or Gyro based vessels of all types – including High Speed Craft (HSC). The Navitron NT888G MK2 Autopilot is fully MED Module B Type Approved incorporating BAMS compliance with IMO Resolution MSC.302(87) and is a technologically advanced, powerfully equipped, user-friendly Adaptive Autopilot.



- **Fully BAMS Compatible:** to IMO Res MSC.302(87).
- **Track Steer:** Multi Waypoint Steering via Plotter/ECDIS NMEA Data.
- **NMEA & Pulse Speed Inputs.**
- **4-20mA Draft Input.**
- **Bowthruster & Rudder Control.**
- **Off Course and Watch Alarms.**
- **Programmable Turns:** RAD / ROT, Next Course etc.
- **Automatic Stability:** Compensates for Rudder Speed variations.
- **Heading / VDR output Data:** NMEA, Step by Step & Furuno Heading (\$xxHTD & \$xxRSA VDR).
- **4 Mag/Gyro Heading Inputs:** Mag Coil, 2 x NMEA, 1 x Step

**Model NT888G MK2**

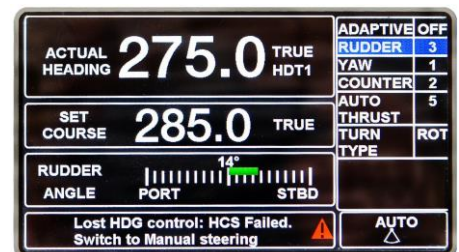
*Dims 204mm x 132mm x 48.4mm (depth)*

Equally suited to new build and retrofit applications across an exceptionally wide range (ocean going tugs, passenger & cargo vessels, tankers to High Speed Craft etc.) the NT888G MK2 Autopilot offers traditional Navitron reliability reinforced by Adaptive control technology. The Adaptive function automatically monitors and self tunes the Autopilot parameters to provide optimum steering performance whether operating in a low speed towing mode or on a high speed passenger ferry underway at 50 knots.

With a standard scope of supply comprising NT888G MK2 Control Unit suitable for foot bracket or panel mounting, robust Rudder Reference Unit and central Distribution Unit, the Autopilot System is immediately compatible with a wide range of vessel steering configurations including single and dual solenoid systems and voltage ( $\pm 10Vdc$ ) or current driven (4-20mA) Steering Amplifiers.

### Autopilot System features include:

- **4.3" Colour Display showing Set Course, ROT, Actual Heading, Speed Data, Rudder Angle, BAMS Alert Messages and Icons.**
- **"Next Course", "U Turn" and permanent Heading changes in 1°/ 5°/10° steps etc. via dedicated keys.**
- **Operator selectable Display Mode and Illumination Control.** (Light characters on a dark background or vice versa).
- **Optional equipment includes Power Steer Controls, Analogue / Digital Heading Repeaters and Rudder Indicators.**



**NAVITRON SYSTEMS LTD** (Registered in England No. 2607869)  
17 The Tanneries, Brockhampton Lane, Havant, Hampshire UK PO9 1JB  
TEL: (UK) 023 9249 8740 (INT) +44 23 9249 8740  
E-mail: sales@navitron.co.uk Web: www.navitron.co.uk

# NAVITRON SYSTEMS LTD

## NT888G MK2 Autopilot System Configuration

