

SmartFind M5 AIS Class A Transponder

Features AIS MOB SART alarm to aid MOB recovery.
Provides automated “ship to ship” and “ship to shore”
navigation communication.





SmartFind M5 AIS Class A Transponder

SmartFind M5 Class A provides automated AIS communication from 'ship-to-ship' and 'ship-to-shore', transmitting and receiving vessel, voyage and safety related information.

Own vessel voyage, position and course information is automatically transmitted and the AIS information provided by other ships in the vicinity, shore based stations and AIS equipped aids to navigation are clearly displayed.

The complete AIS solution

The comprehensive interface capability of SmartFind M5 supports connection to a vessel's existing navigation sensors; connection of Electronic Chart Display and Information System (ECDIS), or Electronic Chart System (ECS) using NMEA, NMEA2000 or USB interfaces. SmartFind M5 is suitable for all vessels that are required by legislation to fit AIS equipment and is high seas and Inland waterways certified.

The SmartFind M5 AIS Class A Transponder gives mariners the ability to view at a glance the AIS status of vessels all around them and provides access to a host of detailed vessel navigation information.

Key Features

- Compact Design
- 3.5" colour LCD display
- Embedded coastline map
- Detailed target list and Radar overview
- Features AIS MOB SART alarm to aid MOB recovery
- GPS antenna
- Cable junction box, Pilot plug
- Mounting kit and flush mount
- PC AIS Viewer software

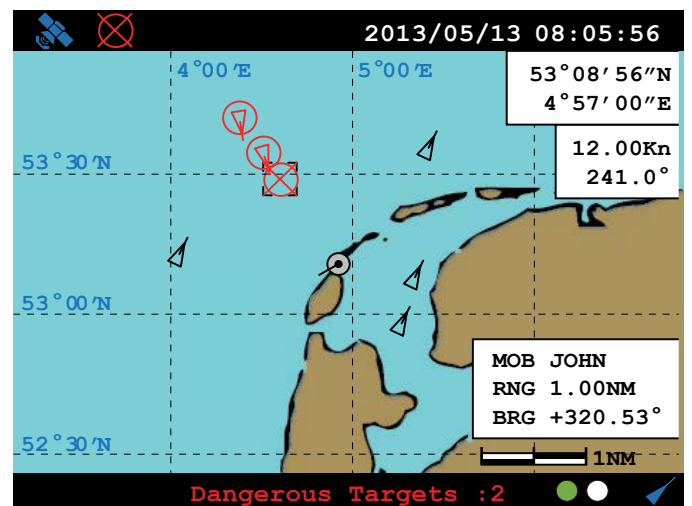
Low cost, reduced size and easy installation make the M5 ideal to meet the budgets and demands of owners and vessel operators.





Pioneering Safety features

SmartFind M5 is a flexible, user-friendly and cost-effective AIS Class A transponder, incorporating a fully comprehensive AIS MOB and AIS SART alarm to aid MOB recovery. It provides on screen indication and internal buzzer when any AIS SART/MOB TXID is received, an optional remote waterproof (MOB / alarm) sounder is also available. It also allows a "crew list" of the vessels own AIS MOB IDs and associated crew name and has a steer to rescue MOB casualty target screen. The AIS MOB alarm feature is compatible with the McMurdo S10 and S20 AIS MOB devices and other AIS SART device.



SmartFind M5 Specifications

Technical Data

Standards: Meets the requirements of the international standards for Class A Shipborne AIS systems; IMO Resolution A.694(17), IMO MSC.74(69) Annex 3, IMO Resolution MSC 191(79), ITU-R M.1371-4, ITU-R M.1084-5, ITU-R M.825-3, IEC 60945, IEC 61993-2, IEC 61162-1,2,3, IEC 61108-1, IEC 62288.

Type Approvals: Marine Equipment Directive (MED) 96/98 EC, 2011/75/EU, 2012/32/EU, USA FCC, Canada I.C., WSV - Inland waterways

Visit www.mcmurdomarine.com for latest information

Technical specifications

Power consumption: 9W average, 65W peak @ 12V DC

Power supply requirements: 12/24 VDC

Default Frequencies: AIS1 161.975 MHz, AIS2 162.025 MHz

DSC channel 70: 156.525 MHz

AIS Transceiver

Power output: 12.5 Watt / 1.0 Watt

Frequency range: 156.025-162.025 MHz

DSC Receiver

Frequency range: VHF Channel 70 (156.525 MHz)

Connection Interface

VHF antenna: PL259, 50 Ohms

GNSS antenna: TCN, 50 Ohms

DC Power, Mini USB, 37 pin data connector.

Interface ports: RS-422, IEC 61162-1,2

3 x navigation sensor input ports SEN1, SEN2, SEN3 and SEN4

2 x Bi-directional input/output ports MAIN and AUX/Pilot

1 x Bi-directional input/output port LR (Long Range)

1 x DGNSS correction input

1 x NMEA 2000

Alarm relay output

Integral GNSS: 50 channel GPS receiver, SBAS, MSAS, WAAS, GAGAN and EGNOS enabled.

Supports DGPS correction by AIS msg 17 or RTCM input port.

Provides UTC and fallback navigation position for AIS.

Controls

Display: 3.5" 320 x 240 colour TFT LCD

Backlight: Multi level

Viewing Mode: Map outline, Radar view, Target List, Message views.

Controls: 6 keys, Multi-Function Knob

Menu language options include: French, Spanish, German.

Items included

- Transponder unit with colour display
- GPS antenna
- Junction box and link cable
- Pilot plug — remote socket box
- Companion PC AIS Viewer Software

Environmental

Operating temperature: -15 °C to +55 °C

Storage temperature: -20 °C to +70 °C

General: IEC 604945 protected category

Control unit: IPX2

Physical

Width x Height x Depth: 261 x 184 x 102 mm

Mounting: Desk bracket and panel fixing kit included

Weight: 2.5 kg

Breakout junction box

Screw termination connection block.

Width x Height x Depth: 165 x 55 x 85 mm

GPS antenna

Size: Diameter 90.8 mm x 104.7 mm high

Mounting: 11/4 inch thread

Cable 10m, connector (fitted): TNC 50 Ohms

Pilot Plug box

IMO compliant socket with 2m cable

Width x Height x Depth: 104 x 60 x 40 mm

Length including pole extended: 155 cm

Lanyard: 10 m, 50Kg breaking strain

Mounting

Stowage case (packed): 940g H390 x D80 x W150 (mm)

Bulkhead bracket: 230g

